

# ManageEngine | NetFlow Analyzer

## Professional Plus Edition

- Troubleshoot Network Incidents Faster
- Make Informed Capacity Planning Decisions
- Ensure Application Performance
- Protect Your Network Against Threats
- Validate Your QoS Policy Settings

## Drilldown to the root-QoS

### NETWORK FORENSICS

- Real-time visibility into top applications and talkers in the network.
- Detection of unauthorized WAN traffic.
- Identify virus, worms and DoS attacks in real-time.
- Understand the history of security violations with alert reports.

### APPLICATION MONITORING & PROFILING

- Recognize applications that use dynamic ports by performing a deep-packet inspection using Cisco NBAR.
- User defined Application tracking.
- Flow de-duplication while accounting.

### CAPACITY PLANNING

- Long term reporting and accurate trend over extended historic periods.
- Make informed capacity planning decisions.
- Minimize cost and maximize performance.

### DEPARTMENT WISE ANALYSIS

- Reports on department wise bandwidth usage by creating IP groups and interface groups.
- Create device groups and grant access privileges to users.

### VALIDATION OF QOS PARAMETERS

- Monitor Class based pre and post policy traffic usage, drops and queuing using Cisco CBQoS.
- Set priority for your Business-Critical applications and ensure proper bandwidth usage using ToS and QoS.
- Support for Cisco NBAR.

### DATA GRANULARITY & REPORTING

- Real time reports with 1 minute granularity.
- Every flow from every device stored up to 1 month.
- Aggregated data stored for ever for historic reports
- Ability to view reports in different granularity - 10 min, hourly, daily, weekly, monthly, and custom time period.
- Reports can be exported as PDF / CSV.
- The physical location of routers across a geographically dispersed network can be seen through Google Maps.

### ALERTING AND SCHEDULING OF REPORTS

- Set up alerts based on link utilization.
- Send emails or SNMP Traps when thresholds are exceeded.
- Automatically mail reports at configured time intervals to desired recipients.



## ACCOUNTING / BILLING

- Generation of periodic bills for accounting and for charge-back.
- Useful for ISP and enterprises.
- Volume / speed based bill plans and Ad-hoc billing.

## MULTIVENDOR SUPPORT & FLOW TECHNOLOGY

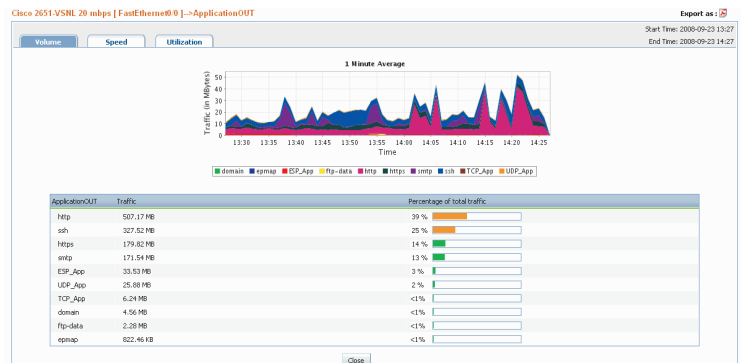
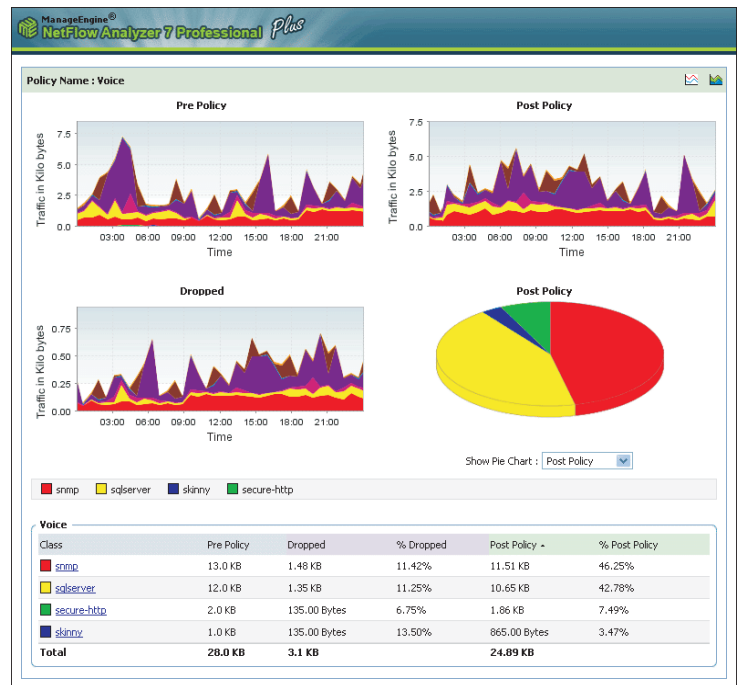
- Supports Cisco, 3COM, Juniper, Foundry Networks, Hewlett-Packard and more.
- Leverages on NetFlow®, sFlow®, cflowd®, J-Flow®, IPFIX®, NetStream®.
- Supports Cisco NBAR and Cisco CBQoS.

## ARCHITECTURE

- All software solution. Runs on Windows and Linux.
- Integrated collector and flow processing engine.
- Radius server authentication for users.

## INTEGRATION WITH OTHER MANAGEENGINE PRODUCTS

- NetFlow Analyzer can seamlessly integrate with the network monitoring tool, OpManager, one of AdventNet's ManageEngine suite of products.
- View LAN device details along with the detailed interface traffic reports.



AdventNet provides affordable software for management and provisioning of complete networks, systems, and IT applications. With a broad product portfolio and an active customer base ranging from enterprises, equipment vendors, and service providers.

AdventNet has emerged as a very affordable and high quality alternative to expensive software that is common in this industry.

Website : [www.netflowanalyzer.com](http://www.netflowanalyzer.com)  
 Email : [support@netflowanalyzer.com](mailto:support@netflowanalyzer.com)  
 Toll Free : +1 888 720 9500  
 Forums : [forums.netflowanalyzer.com](http://forums.netflowanalyzer.com)



AdventNet, Inc. 5200 Franklin Dr, Suite 115,  
 Pleasanton, CA 94588, USA.

Website: [www.adventnet.com](http://www.adventnet.com),  
 Email: [sales@adventnet.com](mailto:sales@adventnet.com),  
 Phone: +1 925 924 9500